



100-105^{Q&As}

Cisco Interconnecting Cisco Networking Devices Part 1 (ICND1 v3.0)

Pass Cisco 100-105 Exam with 100% Guarantee

Free Download Real Questions & Answers **PDF** and **VCE** file from:

<https://www.geekcert.com/100-105.html>

100% Passing Guarantee
100% Money Back Assurance

Following Questions and Answers are all new published by Cisco
Official Exam Center

-  **Instant Download** After Purchase
-  **100% Money Back** Guarantee
-  **365 Days** Free Update
-  **800,000+** Satisfied Customers





QUESTION 1

Which command enables IPv6 forwarding on a cisco router?

- A. ipv6 host
- B. ipv6 unicast-routing
- C. ipv6 local
- D. ipv6 neighbor

Correct Answer: B

Enabling IPv6 on Cisco IOS Software Technology

<http://www.ciscopress.com/articles/article.asp?p=31948andseqNum=4> The first step of enabling IPv6 on a Cisco router is the activation of IPv6 traffic forwarding to forward unicast IPv6 packets between network interfaces. By default, IPv6 traffic forwarding is disabled on Cisco routers. The ipv6 unicast-routing command is used to enable the forwarding of IPv6 packets between interfaces on the router. The syntax for this command is as follows: Router(config)#ipv6 unicast-routing The ipv6 unicast-routing command is enabled on a global basis.

QUESTION 2

Which of the following options could be used on router to prevent reassign IP address statically?

- A. Pool
- B. Lease
- C. Client ID
- D. Exclude address

Correct Answer: D

QUESTION 3

Where does a switch maintain DHCP snooping information ?

- A. in the MAC address table
- B. in the CAM table
- C. in the DHCP binding database
- D. in the VLAN database

Correct Answer: C



QUESTION 4

Refer to the exhibit.



Instructions

This item contains several questions that you must answer. You can view these questions by clicking on the corresponding button to the left. Changing questions can be accomplished by clicking the numbers to the left of each question. In order to complete the questions, you will need to refer to the Exhibit.

To gain access to the Exhibit, click on the Exhibit button at the bottom of the screen. When you have finished viewing the Exhibit, you can return to your questions by clicking on the Questions button to the left.

Each of the windows can be minimized by clicking on the [-]. You can also reposition a window by dragging it by the title bar.

Scenario

Refer to the Exhibit. As the first step in verifying a local host configuration, a network technician issues the `ipconfig /all` command on a computer. Use the results of the command to answer the five questions shown on the Questions tab.

Exhibit

```
C:\WINNT\system32\cmd.exe


Connection-specific DNS Suffix  . : cisco.com
Description . . . . . : Intel(R) PRO/1000 MT Mobile

Physical Address. . . . . : 00-0D-60-FD-F0-34
DHCP Enabled. . . . . : Yes
Autoconfiguration Enabled . . . . : Yes
IP Address. . . . . : 172.15.236.227
Subnet Mask . . . . . : 255.255.255.0
Default Gateway . . . . . : 172.15.236.1
DHCP Server . . . . . : 172.15.3.2
DNS Servers . . . . . : 10.4.8.1
                       10.5.2.22
Primary WINS Server . . . . . : 10.69.2.87
Secondary WINS Server . . . . . : 10.69.235.228
Lease Obtained. . . . . : Monday, June 11, 2007 9:26:45 AM
Lease Expires . . . . . : Thursday, June 14, 2007 9:26:45 AM

Ethernet adapter Local Area Connection:

Media State . . . . . : Cable Disconnected
Description . . . . . : Cisco Systems Wireless LAN Adapter

Physical Address. . . . . : 00-0E-9B-48-86-2A
```





From this computer, the network technician is able to successfully ping to the IP address of the primary DNS server configured on the computer. What can the network technician determine about the network?

- A. The DNS server is able to resolve domain names to IP addresses
- B. The router with the address 172.16.3.2 has the correct route to the 10.0.0.0 network
- C. The names of all of the routers in the path can be resolved by the configured DNS servers.
- D. The router with the address 172.16.236.1 has a route it can use to reach network of the DNS server.

Correct Answer: D

QUESTION 5

Which Layer 1 devices can be used to enlarge the area covered by a single LAN segment? (Choose two.)

- A. switch
- B. router
- C. NIC
- D. hub
- E. repeater
- F. RJ-45 transceiver

Correct Answer: DE

QUESTION 6

If NVRAM lacks boot system commands, where does the router look for the Cisco IOS by default?

- A. ROM
- B. RAM
- C. Flash
- D. bootstrap
- E. startup-config

Correct Answer: C

QUESTION 7

Refer to the exhibit. After configuring two interfaces on the HQ router, the network administrator notices an error



message. What must be done to fix this error?

```
HQ# configure terminal
HQ(config)# interface fastethernet 0/0
HQ(config-if)# ip address 192.168.1.17 255.255.255.0
HQ(config-if)# no shutdown
HQ(config-if)# interface serial 0/0
HQ(config-if)# ip address 192.168.1.65 255.255.255.240
HQ(config-if)# no shutdown
% 192.168.1.0 overlaps with FastEthernet0/0
```

- A. The serial interface must be configured first.
- B. The serial interface must use the address 192.168.1.2
- C. The subnet mask of the serial interface should be changed to 255.255.255.0
- D. The subnet mask of the FastEthernet interface should be changed to 255.255.255.240
- E. The address of the FastEthernet interface should be changed to 192.168.1.66

Correct Answer: D

QUESTION 8

Drag and Drop Question

You are performing the initial configuration on a new Cisco device. Drag the task from the left onto the required or optional category on the right.

Select and Place:

Select and Place:



Required Tasks

Optional Tasks

Correct Answer:

Required Tasks

Optional Tasks

QUESTION 9

Which command can you enter to re enable cisco discovery protocol on a local router after it has been disabled ?

- A. Router (config)# cdp run
- B. Router (config-if)# cdp run
- C. Router (config)# cdp enable
- D. Router (config-if)# cdp enable

Correct Answer: A



QUESTION 10

Which three statements are true about the operation of a full-duplex Ethernet network? (Choose three.)

- A. There are no collisions in full-duplex mode.
- B. A dedicated switch port is required for each full-duplex node.
- C. Ethernet hub ports are preconfigured for full-duplex mode.
- D. In a full-duplex environment, the host network card must check for the availability of the network media before transmitting.
- E. The host network card and the switch port must be capable of operating in full-duplex mode.

Correct Answer: ABE

Half-duplex Ethernet is defined in the original 802.3 Ethernet and Cisco says you only use one wire pair with a digital signal running in both directions on the wire. It also uses the CSMA/CD protocol to help prevent collisions and to permit retransmitting if a collision does occur. If a hub is attached to a switch, it must operate in half-duplex mode because the end stations must be able to detect collisions. Half-duplex Ethernet--typically 10BaseT--is only about 30 to 40 percent efficient as Cisco sees it, because a large 10BaseT network will usually only give you 3- to 4Mbps--at most. Full-duplex Ethernet uses two pairs of wires, instead of one wire pair like half duplex. Also, full duplex uses a point-to-point connection between the transmitter of the transmitting device and the receiver of the receiving device, which means that with full-duplex data transfer, you get a faster data transfer compared to half duplex. And because the transmitted data is sent on a different set of wires than the received data, no collisions occur. The reason you don't need to worry about collisions is because now Full-duplex Ethernet is like a freeway with multiple lanes instead of the single-lane road provided by half duplex. Full-duplex Ethernet is supposed to offer 100 percent efficiency in both directions; this means you can get 20Mbps with a 10Mbps Ethernet running full duplex, or 200Mbps for FastEthernet.

QUESTION 11

Refer to the exhibit.

```
Router1# telnet 192.168.9.2
Trying 192.168.9.2 ... Open
User Access Verification
Password:
Router2> <Ctrl-Shift-6>x
Router1#
```

If the resume command is entered after the sequence that is shown in the exhibit, which router prompt will be displayed?



- A. Router1>
- B. Router1#
- C. Router2>
- D. Router2#

Correct Answer: C

The Ctrl-Shift-6 x command suspends the telnet session and hence the prompt will again be Router2>

QUESTION 12

Examine the network diagram and router output shown in the exhibit.

```

BHM# show IP interface brief
Interface          IP-Address      OK?  Method  Status          Protocol
FastEthernet0/0    192.168.18.1    YES  NVRAM   up              up
Serial0/0          192.168.15.2    YES  NVRAM   administratively down  down
FastEthernet0/1    192.168.17.1    YES  NVRAM   administratively down  down
Serial0/1          unassigned      YES  NVRAM   administratively down  down
  
```

Users on the BHM LAN are unable to access the server attached to the BHE router. What two things should be done to fix this problem? (Choose two)

- A. Enter the configuration mode for interface fastethernet0/0.
- B. Enter the configuration mode for interface serial0/0.
- C. Enter the configuration mode for interface serial0/1.
- D. Issue the run command.
- E. Issue the enable command.
- F. Issue the no shutdown command.

Correct Answer: BF



QUESTION 13

A switch has 48 ports and 4 VLANs. How many collision and broadcast domains exist on the switch (collision, broadcast)?

- A. 4, 48
- B. 48, 4
- C. 48, 1
- D. 1, 48
- E. 4, 1

Correct Answer: B

A switch uses a separate collision domain for each port, and each VLAN is a separate broadcast domain.

QUESTION 14

Refer to the exhibit. Which feature is enabled by this configuration?

```
R1(config)#ip nat pool cisco 10.1.1.0 10.1.1.50 255.255.255
```



- A. static NAT translation
- B. a DHCP pool
- C. a dynamic NAT address pool
- D. PAT

Correct Answer: C

QUESTION 15

Drag and Drop Question


Various protocols are listed on the left On the right are applications for the use of those protocols. Drag the protocol on the left to an associated function for that protocol on the right (Not all options are used)

Select and Place:



Various protocols are listed on the left. On the right are applications for the use of those protocols. Drag the protocol on the left to an associated function for that protocol on the right. (Not all options are used.)


ICMP	A PC sends packets to the default gateway IP address the first time since the PC turned on.
DHCP	The network administrator is checking basic IP connectivity from a workstation to a server.
RARP	The TCP/IP protocol stack must find an IP address for packets destined for a URL.
UDP	A network device will automatically assign IP addresses to workstations.
DNS	
ARP	



Correct Answer:

Various protocols are listed on the left. On the right are applications for the use of those protocols. Drag the protocol on the left to an associated function for that protocol on the right. (Not all options are used.)

	ARP
	ICMP
RARP	DNS
UDP	DHCP



+

ARP: A PC sends packets to the default gateway IP address the first time since the PC turned on.

+

ICMP: The network administrator is checking basic IP connectivity from a workstation to a server.

+

DNS: The TCP/IP protocol stack must find an IP address for packets destined for a URL.

+

DHCP: A network device will automatically assign IP addresses to workstations.



QUESTION 16

What is true about Cisco Discovery Protocol?

- A. it discovers the routers, switches and gateways.
- B. it is network layer protocol
- C. it is physical and data link layer protocol
- D. it is proprietary protocol

Correct Answer: D

QUESTION 17

When is a routing table entry identified as directly connected?

- A. when the local router is in use as the network default gateway
- B. when the network resides on a remote router that is physically connected to the local router
- C. when an interface on the route is configure with an ip address and enabled
- D. when the route is statically assigned to reach a specific network

Correct Answer: C

QUESTION 18

Which router command can be used to determine the status of Serial 0/0?

- A. show ip route
- B. show interfaces
- C. show s0/0 status
- D. debug s0/0
- E. show run
- F. show version

Correct Answer: B

QUESTION 19

The left describes the types of cables, while the right describes the purposes of the cables. Drag the items on the left to the proper locations. (Not all items can be used.)



Select and Place:

- crossover
- null modem
- straight-through
- rollover
- 9-25 pin serial

- switch access port to router
- switch to switch
- PC COM to switch Console port



Correct Answer:

-
- null modem
-
-
- 9-25 pin serial

- straight-through
- crossover
- rollover



- +
- switch access port to router: straight-through
- +
- switch to switch: crossover
- +
- PC COM to switch Console port: rollover

QUESTION 20

What happens when the cable is too long?



- A. Baby Giant
- B. Late collision

Correct Answer: B

QUESTION 21

Which command can you enter to create a NAT pool of 6 addresses?

- A. Router(config)#ip nat pool test 175.17.12.69 175.17.12.74 prefix-length 24
- B. Router(config)#ip nat pool test 175.17.12.69 175.17.13.74 prefix-length 16
- C. Router(config)#ip nat pool test 175.17.12.66 175.17.12.72 prefix-length 8
- D. Router(config)#ip nat pool test 175.17.12.69 175.17.12.76 prefix-length 8

Correct Answer: A

QUESTION 22

Which value indicate the distance from the ntp authoritative time source?

- A. priority
- B. location
- C. layer
- D. stratum

Correct Answer: D

QUESTION 23

Which function enables an administrator to route multiple VLANs on a router?

- A. IEEE 802 1X
- B. HSRP
- C. port channel
- D. router on a stick

Correct Answer: D

QUESTION 24



Which dynamic routing protocol uses only the hop count to determine the best path to a destination?

- A. IGRP
- B. RIP
- C. EIGRP
- D. OSPF

Correct Answer: B

Determining the best path involves the evaluation of multiple paths to the same destination network and selecting the optimum or shortest path to reach that network. Whenever multiple paths to the same network exist, each path uses a different exit interface on the router to reach that network. The best path is selected by a routing protocol based on the value or metric it uses to determine the distance to reach a network. A metric is the quantitative value used to measure the distance to a given network. The best path to a network is the path with the lowest metric. Dynamic routing protocols typically use their own rules and metrics to build and update routing tables. The routing algorithm generates a value, or a metric, for each path through the network. Metrics can be based on either a single characteristic or several characteristics of a path. Some routing protocols can base route selection on multiple metrics, combining them into a single metric. The following lists some dynamic protocols and the metrics they use: Routing Information Protocol (RIP): Hop count Open Shortest Path First (OSPF): Cisco routers use a cost based on cumulative bandwidth from source to destination Enhanced Interior Gateway Routing Protocol (EIGRP): Bandwidth, delay, load, reliability

QUESTION 25

A router has learned three possible routes that could be used to reach a destination network. One route is from EIGRP and has a composite metric of 20514560. Another route is from OSPF with a metric of 782. The last is from RIPv2 and has a metric of 4. Which route or routes will the router install in the routing table?

- A. the OSPF route
- B. the EIGRP route
- C. the RIPv2 route
- D. all three routes
- E. the OSPF and RIPv2 routes

Correct Answer: B

When one route is advertised by more than one routing protocol, the router will choose to use the routing protocol which has lowest Administrative Distance. The Administrative Distances of popular routing protocols are listed below:



Route Source	Administrative Distance
Directly Connected	0
Static	1
EIGRP	90
EIGRP Summary route	5
OSPF	110
RIP	120

QUESTION 26

What is the default configuration of a Cisco switch?

- A. No default gateway assigned
- B. System name is Cisco

Correct Answer: A

QUESTION 27

Refer to the exhibit.

```
RouterD# show ip interface brief
Interface      IP-Address      OK? Method Status Protocol
FastEthernet0/0 192.168.5.3    YES manual up      up
FastEthernet0/1 10.1.1.2        YES manual up      up
Loopback0      172.16.5.1     YES NVRAM up      up
Loopback1      10.154.154.1   YES NVRAM up      up
```

Given the output for this command, if the router ID has not been manually set, what router ID will OSPF use for this router?

- A. 10.1.1.2
- B. 10.154.154.1
- C. 172.16.5.1
- D. 192.168.5.3

Correct Answer: C

The highest IP address of all loopback interfaces will be chosen -> Loopback 0 will be chosen as the router ID.



QUESTION 28

What is the subnet address of 192.168.1.42 255.255.255.248?

- A. 192.168.1.16/28
- B. 192.168.1.32/27
- C. 192.168.1.40/29
- D. 192.168.1.8/29
- E. 192.168.1.48/29

Correct Answer: C

QUESTION 29

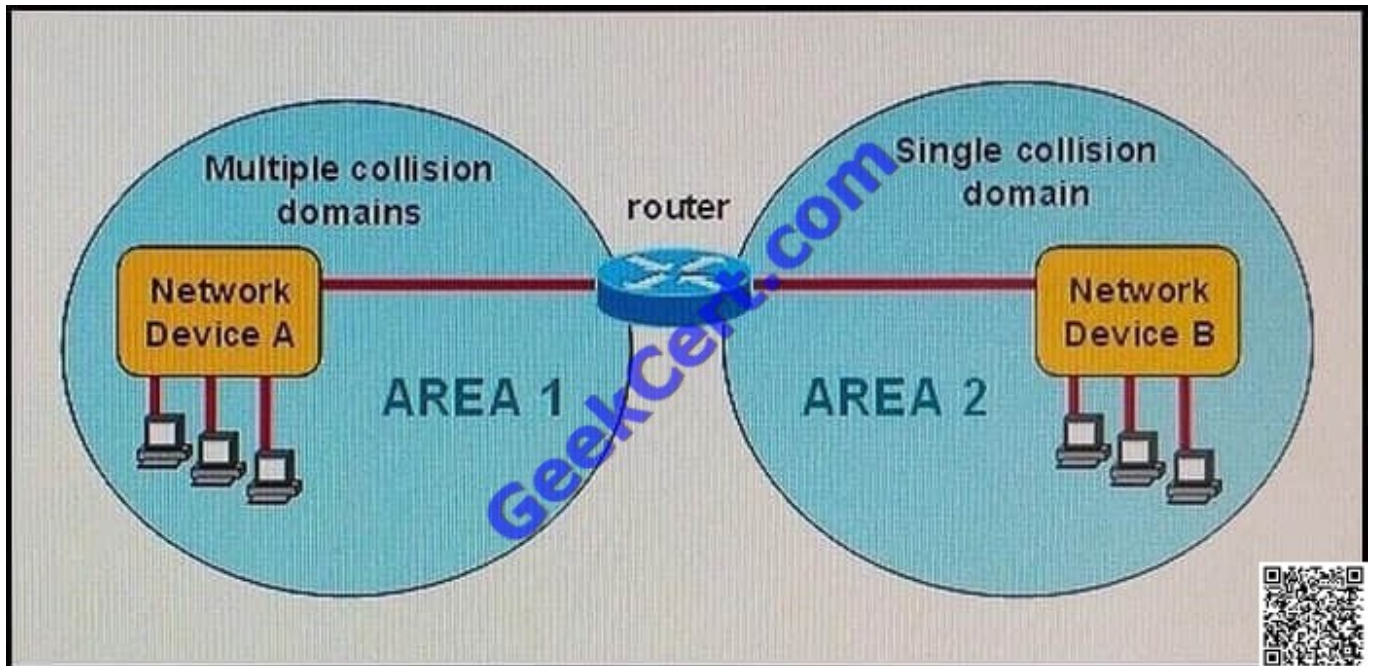
Which IPV6 feature is supported in IPV4 but is not commonly used?

- A. unicast
- B. multicast
- C. anycast
- D. broadcast

Correct Answer: C

QUESTION 30

Refer to the exhibit. A network has been planned as shown. Which three statements accurately describe the areas and devices in the network plan? (Choose three.)



- A. Area 2 contains a Layer 2 device.
- B. Network Device B is a hub.
- C. Network Device A is a hub.
- D. Network Device A is a switch.
- E. Area 1 contains a Layer 2 device.
- F. Network Device B is a switch.

Correct Answer: BDE

QUESTION 31

What are types of IPv6 static routes? (Choose Three.)

- A. Recursive routes
- B. Directly connected routes
- C. Fully specified routes

Correct Answer: ABC

QUESTION 32

Which two statements are true about IPv6 Unique Local Addresses? (Choose Two.)

- A. It is the counterpart of IPv4 private addresses



B. It uses FC00::7 as prefix

Correct Answer: AB

QUESTION 33

Which set of conditions comprises a successful ping attempt between two connected routers configured with IP addresses on the same subnet?

- A. The destination host receives an echo reply from the source host within one second and the source host receives an echo request from the destination host.
- B. The destination host receives an echo request from the source host within one second.
- C. The destination host receives an echo reply from the source host within one second and the source host receives an echo reply from the destination host within two seconds.
- D. The destination host receives an echo request from the source host and the source host receives an echo request from the destination host within one second.
- E. The destination host receives an echo request from the source host and the source host receives an echo reply from the destination host within two seconds.

Correct Answer: E

QUESTION 34

Which feature automatically disables CEF when it is enabled?

- A. RIB
- B. ACL logging
- C. multicast
- D. IP redirects

Correct Answer: B

ACL Logging means to use the "log" or "log-input" parameters at the end of the ACL statements. For example: "access-list 100 deny icmp any any echo reply log-input". In either situation, remember that using either of these two parameters disables CEF switching, which seriously impacts the performance of the router.

QUESTION 35

Which of the following command can be use to access all the files in a system?

- A. syslog
- B. IFS



C. ping

D. NTP

Correct Answer: B

QUESTION 36

Which two options will help to solve the problem of a network that is suffering a broadcast storm? (Choose two.)

A. a bridge

B. a router

C. a hub

D. a Layer 3 switch

E. an access point

Correct Answer: BD

Routers and layer 3 switches will not propagate broadcast traffic beyond the local segment, so the use of these devices is the best method for eliminating broadcast storms.

QUESTION 37

Which protocol does ipv6 use to discover other ipv6 nodes on the same segment?

A. CLNS

B. TCPv6

C. NHRP

D. NDP

E. ARP

Correct Answer: D

QUESTION 38

Which Ethernet interface command is present when you boot a new Cisco router for the first time?

A. speed 100

B. shutdown

C. ip address 192.168.1.1 255.255.255.0



D. duplex half

Correct Answer: B

QUESTION 39

What must occur before a workstation can exchange HTTP packets with a web server?

- A. A UDP connection must be established between the workstation and its default gateway.
- B. A UDP connection must be established between the workstation and the web server.
- C. A TCP connection must be established between the workstation and its default gateway.
- D. A TCP connection must be established between the workstation and the web server.
- E. An ICMP connection must be established between the workstation and its default gateway.
- F. An ICMP connection must be established between the workstation and the web server.

Correct Answer: D

HTTP uses TCP port 80. <http://pentestlab.wordpress.com/2012/03/05/common-tcpip-ports/>

QUESTION 40

Which interface configuration is used with a router-on-a-stick configuration?

- A. VRF
- B. Subinterfaces
- C. PIM sparse mode
- D. Passive-interface

Correct Answer: B

[100-105 Practice Test](#)

[100-105 Exam Questions](#)

[100-105 Braindumps](#)



To Read the [Whole Q&As](#), please purchase the [Complete Version](#) from [Our website](#).

Try our product !

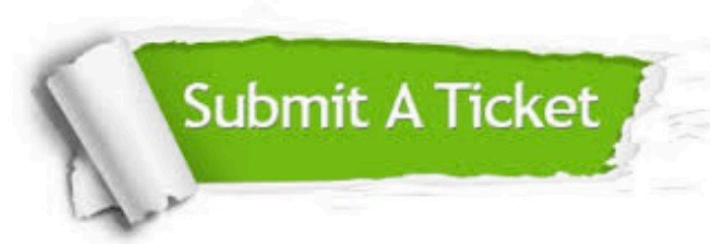
- 100% Guaranteed Success
- 100% Money Back Guarantee
- 365 Days Free Update
- Instant Download After Purchase
- 24x7 Customer Support
- Average 99.9% Success Rate
- More than 800,000 Satisfied Customers Worldwide
- Multi-Platform capabilities - [Windows](#), [Mac](#), [Android](#), [iPhone](#), [iPod](#), [iPad](#), [Kindle](#)

We provide exam PDF and VCE of Cisco, Microsoft, IBM, CompTIA, Oracle and other IT Certifications. You can view Vendor list of All Certification Exams offered:

<https://www.geekcert.com/allproducts>

Need Help

Please provide as much detail as possible so we can best assist you.
To update a previously submitted ticket:



 <p>One Year Free Update Free update is available within One Year after your purchase. After One Year, you will get 50% discounts for updating. And we are proud to boast a 24/7 efficient Customer Support system via Email.</p>	 <p>Money Back Guarantee To ensure that you are spending on quality products, we provide 100% money back guarantee for 30 days from the date of purchase.</p>	 <p>Security & Privacy We respect customer privacy. We use McAfee's security service to provide you with utmost security for your personal information & peace of mind.</p>
---	---	--

Any charges made through this site will appear as Global Simulators Limited.
All trademarks are the property of their respective owners.
Copyright © geekcert, All Rights Reserved.